



TECHNICAL & PRODUCTION INFO – VENUE : DE KREUN

LAST UPDATE : mrt '25

PROMOTOR :

Wilde Westen vzw
Conservatoriumplein 1
8500 Kortrijk (Belgium)
VAT: BE 0421 878 635
www.wildewesten.be

LOAD IN ADDRESS :

Conservatoriumplein 1, Kortrijk (near Kortrijk Station)
Loading dock is marked with "LOAD IN" (the double black door)

PARKING :

Artists parking at the venue is **very limited**. Parking is only for vans carrying backline or other stuff needed for the show. There's place for two to three vans max !

Individual cars can **NOT** stay at the load in ! >> Please park at 'parking station' or other underground parkings in the city centre.

Nearest parking = 'Parking station': <https://www.kortrijk.be/adressen/parking-station>

Please mind that we can not provide parking vouchers. This is an artist cost.

Please consider carpooling.

For Busses/Nightliners we need to reserve parking space at least 10 working days in advance near the venue.

Please send your bus specs + licence plate to the production manager at least three weeks prior to the show. The nightliner parking is situated about 30 metres from the load in. This is not our parking, but we can reserve it if needed.

OFFICE ADDRESS :

Wilde Westen vzw @ Muziekcentrum Track* - first floor
Conservatoriumplein 1
8500 Kortrijk
T. +32.56.370.644
E. info@wildewesten.be

CONTACT INFORMATION :

General production Manager: Mich Decruyenaere

T. +32.56.370.644

M. +32.486.659.711

E. mich@wildewesten.be

TECHNICAL CONTACT :

Gert Masschelein

T. +32 474 321 433

E.: gert_masschelein@hotmail.com

VENUE CAPACITY :

600 Main Hall (incl. Balcony & Café)

150 Rooftop

120 Kreun café

DIMENSIONS :

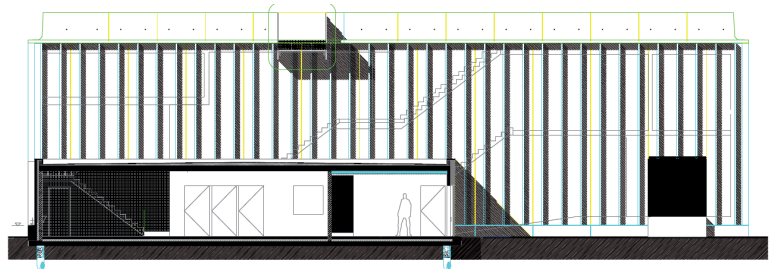
Hall Dimensions : 12m x 15m

Stage Dimensions:

8,60 meters Wide x 5,5 meters Deep

Height: 0,80m

Stage Clearance : 5 meters



Electric Power:

Lights 125A, 3 x 400V+N+PE

Sound 32A, 3 x 400V+N+PE

Backline Power 1x 16A 230V.

Bus Power: Provided at Nightliner Parking. 32A, 3 x 400V+N+PE (please specify in advancing if needed!)

Sound:

Amplification/P.A.:

TOP : 3 x L-Acoustics ARCS II Constant Curvature p/side / LA12X amps

SUB : 4 x L- Acoustics SB28 / LA12X Amplifiers;

FILL : Center Top Fill ARCS Focus. Balcony Fill Center = Kiva.

DELAYS: under Balcony 4x 5XT. All on LA4X Amplifiers.

FOH Console and stage connection:

Allen & Heath SQ7 console + Allen & Heath GX4816 digital stage block.

We have 5 lines of BELDEN F/UTP CAT 6A shielded cable to connect FOH with stage.

4 analog (aes compatible) lines are available as well.

Monitoring:

10 x L-Acoustics X12 Coaxial wedges, 1 x SB18 SUB

2 x L-Acoustics LA4X amplification (8x1000W)

Microphones:

Shure beta91 (2)
Shure beta52 (1)
Shure SM58 (9)
Shure beta58 (4)
Shure SM57 (7)
Shure beta57 (2)
Sennheiser e904 (8)
Sennheiser e906 (2)
Sennheiser MD421 (1)
Sennheiser e835s (2)
Beyer Dynamic M88 (1)
Electro Voice RE20 (1)
Audix D6 (1)
Audix VX5 (1)
Audio Technica AT4041 (3)
JZ microphones BT202 (2)
AKG C214 (4)
Se Electronics V7 (1)
Radial J48 active D.I. (8)
Radial JDI stereo passive D.I (2)

Sound Café:

In the café we have a 4x Martin Audio 3-Way 12" speaker system + 2 x 15" Sub cabinets.

For smaller café concerts we use X12 wedges as a front speaker system, combined with 1 x SB18 SUB.

Miscellaneous

Risers:

5 risers (2 by 1 meter) – 1 riser 2 by 0,5 meter)

Video/Projections :

Please inform us in advance if projections are needed. Our Screen is 16/9 600x 338.
Projector: Barco W12 12000 lumen WUXGA

House Lights

Controls:

1 x Chamsys MQ70 + Extra Wing > sACN
1x ELC dmXLAN nodeGBx 8Node – 8x universe (3 used for houselights)
3 DMX boosters 3P + 5P XLR
Do not hesitate to contact us for a recent light plot

Front Lights:

10x Martin Rush MH6 RGBW moving head LEDwash + 4x PAR64 MFL from balcony

Stage light:

Total of 3 Trusses. Truss 1 & 2 with 2 Manual Chain Hoists on Trolleys. Truss 3 on electrical chain hoists (for guest lights).

6 x Martin Quantum Profile – 475W LED spot with CMY

8x JB Systems Challenger Wash RGBW moving head LEDwash 7x40W

3x Nicols Strob1000-V1 (1000W led strobe)

4x JB Systems Challenger Wash RGBW moving head LEDwash 7x40W - floorlights

6x CLF wallwasher: static LED wash – uplighter

5 x Showtec Active Sunstrip Blinder (750W).

22x single PAR 64 CP61

24CH dimmer

1x Look Unique 2.1 Hazer

Extra Power connections on stage (upstage):

Stage Right: 1x Cee 32A + 2x Cee 16A

Stage Left: 1x Cee 63A + 1x Cee 32A + 2x Cee 16A

Additional Information :

TIMING :

3.00PM	GET IN local tech & production crew
4.00PM	GET IN + LOAD IN headlining act
4.30PM	Sound check headlining act
5.00PM	Get in support act
5.30PM	Sound check support act
6.30PM	Dinner (in house catering @ backstage room)
8.00PM	<u>DOORS</u>
8.30PM	Support on stage
9.30PM	Headliner on stage (if no support: 21h00/9PM)
10.45PM	<u>LIVE CURFEW</u>
11.30PM	BACKSTAGE CURFEW
00.00AM	<u>VENUE COSED (CITY POLICY)</u>

Get in: please send ETA to the production manager if it does not match the standard timing
This timing is the one we use at a standard club show (= support + headliner).

An adapted timing can be negotiated if needed.

No early get ins, unless approved beforehand by the production manager.

No load ins before the local tech & production crew has arrived, please!

If you arrive earlier than get-in-time, feel free to stroll around the city and find a nice coffee shop. We can give you directions. There's a cool café (HOF) and some cool record stores in the neighborhood (Vinyl Corner, Crate, ...)

With sold out shows we open the doors at 19h30 (7.30 pm) standard.

We try to maintain a 22h45 (10.45PM) curfew as people who come by public transport are able to get trains back to their destinations.

If necessary, your van can stay at the parking overnight. Check with production if this option is possible.

Please load in ALL gear the night of the show as we can not ensure someone will be able to be there the next day.

BACKSTAGE :

There is only **one (1) backstage** room in the venue. The backstage is to be shared with the support band and the local crew for dinner.

The backstage is equipped with a small kitchen, 1 shower + sink, chairs, mirror and WIFI (please ask the production manager for the password). Seating for 12 people.

Standard, catering is served in the backstage area upstairs between 6 and 7 PM.

Vegetarian (or vegan, by request) food is prepared fresh with respect for local products and from local suppliers.

No buy outs unless advanced and min. 4 working days in advance.

We never provide cash buy outs or cash fees.

Water (sparkling & non-sparking) in the backstage is provided by Robi, on tap. Bring your reusable bottles. If you don't have one, we have some inhouse for you to use the day of the show, but please don't take 'em with you ! We do not provide water in disposable plastic bottles for obvious reasons.

Hotel : (if applicable and included in deal)

We always work with The Market Hotel (***). About 5 minutes walking distance from the venue and a two minute walk from the train station. Check in from 15h00 (3pm) possible. Breakfast is included. Ask the hotel for details. There's a night desk, so check in is possible throughout the night. Please always return your key card to the desk manager before leaving !

The Market (by Parkhotel) Hotel, Graanmarkt 6, 8500 Kortrijk.

www.themarketbyparkhotel.be

Phone : 00 32 56 21 97 21

MERCHANDISE :

Merch can be sold in the café. Tabela will be provided if needed. We do not enforce merch fees (as we think it's ridiculous). Note that we do NOT have someone to sell merch for you.

GUESTLIST :

If agreed on a guestlist – we need **full names + email** at least two full working days before the actual show, to send the tickets by mail. There is no 'at the door' – guestlist !

SOUND RESTRICTION :

Belgian sound restriction legislation from 01/01/2013 onwards : max soundlevel at FOH position: **100 dbA Leq 60 minutes and 102dbA Leq 15 minutes.**

These restrictions can (and will) be checked by official city services at any moment. Violations of this legislation might cause us to loose our license, which would be quite disastrous for us as well as for the bands playing here.

The promotor, the production or the local sound engineer have the right to intervene when bands or engineers do not respect these restrictions. We do hope you understand and work with us on this.

By Belgian law, **smoking** is absolutely **prohibited** in the entire building. There's a designated outside smoking area just next to the café. Ask the production on the night of your show.

Obviously we want our venue to be a 100% **safe place for everybody** and do **not** tolerate any forms of racism, misogyny, transphobia, homophobia or violence / discrimination / drugs of any kind !

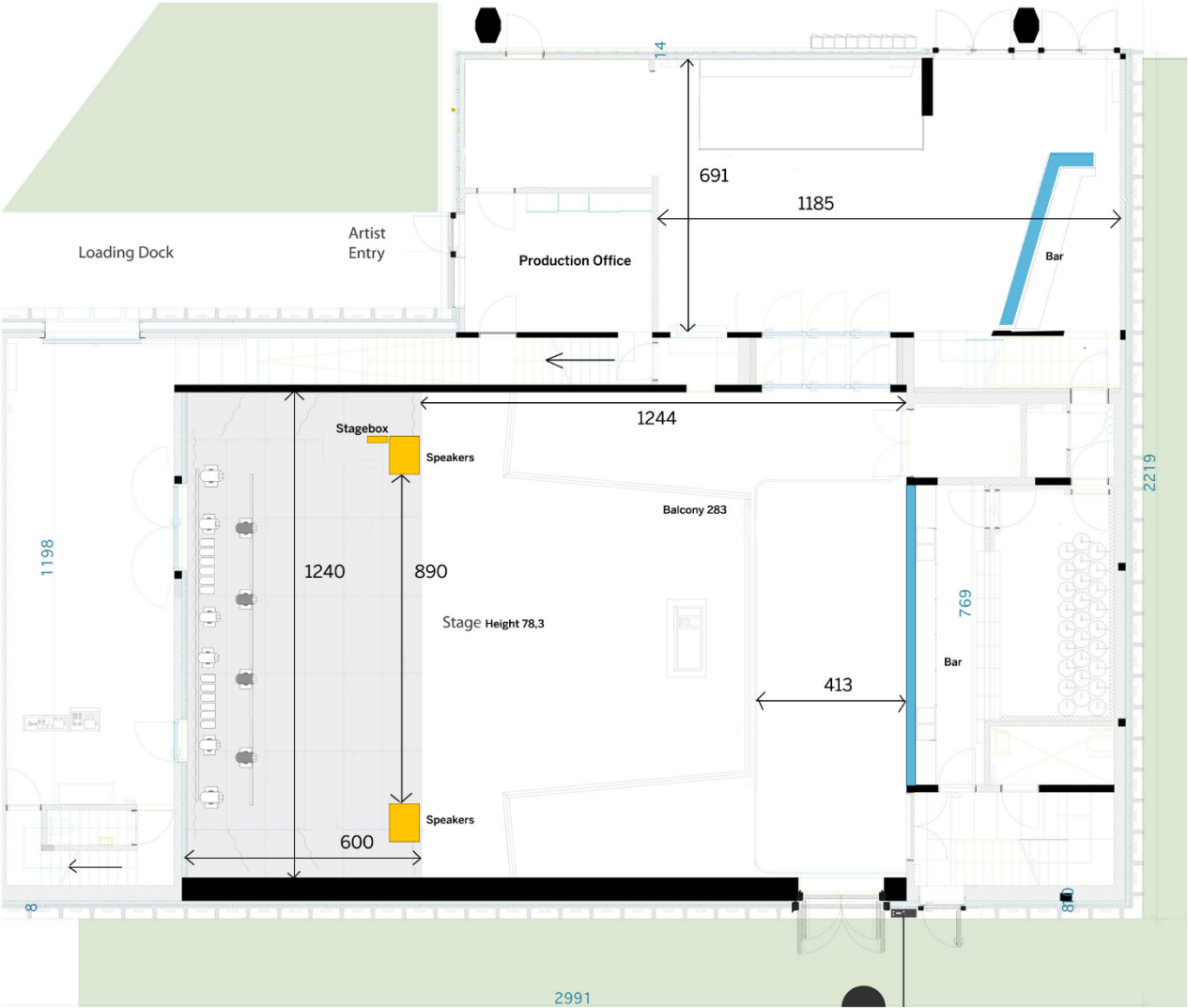
We value our green policy and encourage bands and their crews to do the same. There's only one planet and we all have a responsibility here.

Thanks a lot !!

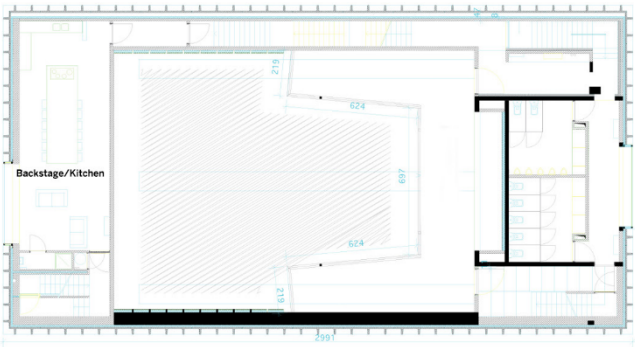
We're looking forward to having u here and working with you & we hope u enjoy your stay here.

TEAM WILDE WESTEN

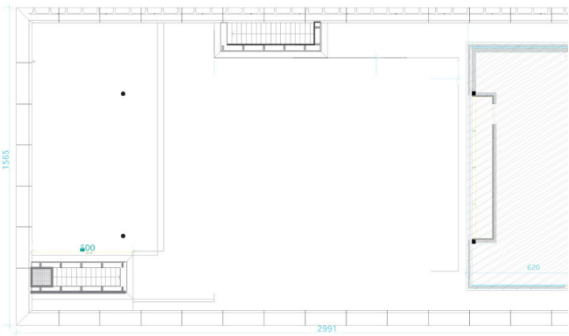
FLOOR PLAN:



First Floor/ Main Hall



Second Floor / Balcony



Rooftop